



"Growing together at the heart of God's community"



**Glazebury C.E. Primary School**

Warrington Road, Glazebury, Warrington, Cheshire. WA3 5LZ.

**Head Teacher: Mrs Karen Mowbray BA Hons, M.Ed**

**Tel: 01925 949404**

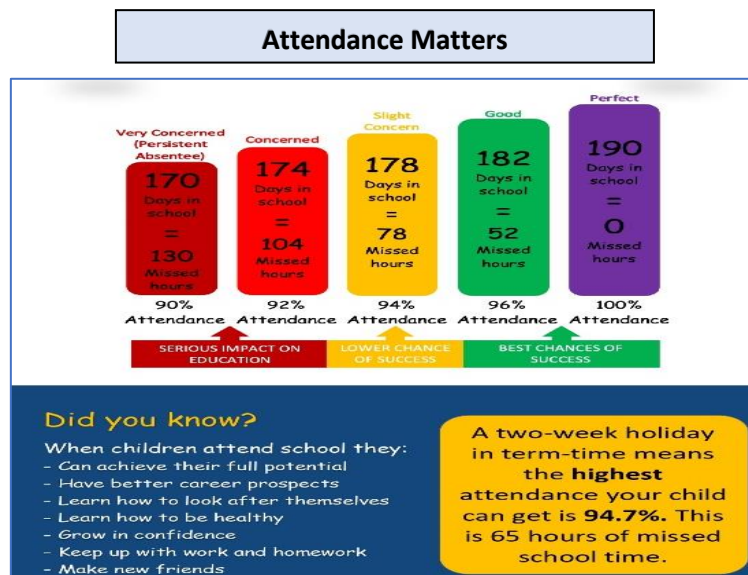
**Email: [glazeburyprimary@ldst.org.uk](mailto:glazeburyprimary@ldst.org.uk)**

15<sup>th</sup> September , 2023

Dear Parent/Carers,

**Attendance Matters:** Regular attendance is the key to success throughout a child's education. It ensures that every child gets the most from their time in school, can achieve their potential and can be fully prepared for the next stage of their education or training. School attendance impacts significantly on the achievement and attainment of children, and I am sure that you will make every effort to ensure your child attends school regularly, so that they can flourish, achieve and experience everything they possible can.

Glazebury CE primary, the Liverpool Diocesan Schools Trust (LDST) and the Local Authority are working together to improve school attendance rates and we have a target of **97% attendance** across the year. The aim is for all children to have 100% attendance, where possible. Our attendance policy is published on our website and can be found here [www.glazebury.eschools.co.uk](http://www.glazebury.eschools.co.uk)



**Failure to attend regularly means that your child is missing out on vital learning.**

At Glazebury CE Primary we are always, open and honest about the effect that attendance has on a child and we monitor the attendance of every child in school closely, this is communicated to parents half termly. We colour grade children's attendance and inform, we also offer support to aid improvement if and where needed.:

1. All pupils with attendance **above 96%** are **highlighted (green)**
2. All pupils with attendance **between 92% and 95.99%** are **highlighted**. (Amber)
3. All pupils with attendance **between 90 and 91.99%** are **highlighted** (red) as they are close to becoming persistently absent (PA) and we will want to discuss this with you, to bring about rapid improvements.
4. All pupils whose attendance falls **below 90% are PA** and **highlighted** (brown) and will be referred to the Head Teacher for planned actions to support improvements.

At points 3 and 4, **no absences will be authorised unless medical evidence is provided.**

**May I also take this opportunity to remind you that holidays in term time are not permitted.** Please consult our holiday dates prior to booking any holidays. A two week holiday in term time means that the highest attendance your child can get is 94.7%. This equates to **65 hours of missed education.**

**As ever, we are very grateful for your support and are here to help you every step of the way, so if you have any concerns, worries or other issues about your child's attendance, please do not hesitate to contact us.**

Kind Regards

**Mrs K Mowbray**

**Head Teacher**

## Attendance Matters

