

ONLINE SAFETY POLICY

2025



OUR TRUST'S PRAYER

Heavenly Father

Let peace, friendship and love grow in our schools

Send the Holy Spirit to give: Excellence to our learning

Love to our actions and Joy to our worship

Guide us to help others So that we may all

Learn, Love and Achieve,

Together with Jesus.

Amen

School values central to life in our community

At Glazebury CE Primary our core values of **Love** and **Wisdom** are at the centre of all that we do and all that we are. We feel that the values of friendship, truthfulness, hope, peace, creation, trust, compassion, justice, humility and forgiveness are fundamental to the growth of all.

Love never fails, 1 Corinthians 8:13

For the Lord gives **wisdom** : from his mouth comes knowledge and understanding. Proverbs 2:6

The **HEART** of our Curriculum:

H – Helping children prepare for life, growing with God.

E – Embracing Christian Values.

A - Achievement for all.

R - Reading at the **heart** of our school

T – Teaching a knowledge rich curriculum.

1. Introduction

1.1 Key people / dates

Designated Safeguarding Lead (DSL), with lead responsibility for filtering and monitoring	K Mowbray Head Teacher
Deputy Designated Safeguarding Leads / DSL Team Members	Sachin Sharma DHT
Link governor for safeguarding	Mr Stuart Roberts Tighe
Curriculum leads with relevance to online safeguarding and their role [e.g. PSHE/RSHE/RSE/Computing leads]	Mr David Beechey Mrs A Wilcox
Network manager / other technical support	Tech Minder
Date this policy was implemented by school and by whom	2024 and reviewed June 2025

1.2 What is this policy? HT

Online safety is an integral part of safeguarding and requires a whole school, cross-curricular approach and collaboration between key school leads. Accordingly, this policy is written in line with 'Keeping Children Safe in Education' 2024 (KCSIE), 'Teaching Online Safety in Schools', statutory RSHE guidance and other statutory documents. It is cross-curricular (with relevance beyond Relationships, Health and Sex Education, Citizenship and Computing) and designed to sit alongside or be integrated into your school's statutory Child Protection & Safeguarding Policy. Any issues and concerns with online safety must always follow the school's safeguarding and child protection procedures.

1.3 Who is it for; when is it reviewed? HAT

This policy is a living document, subject to full annual review but also amended where necessary during the year in response to developments in the school and local area. Although many aspects will be informed by legislation and regulations, we will involve staff, governors, pupils/students and parents in writing and reviewing the policy and make sure the policy makes sense and is possible to follow in all respects. This will help all stakeholders to understand the rules that are in place and why, and that the policy affects day-to-day practice. Pupils/students could help to design a version in language their peers understand or help you to audit compliance. Acceptable Use Policies for different stakeholders help with this – ensure these are reviewed alongside this overarching policy. Any changes to this policy should be immediately disseminated to all the above stakeholders.

1.4 Who is in charge of online safety?

KCSIE makes clear that “the designated safeguarding lead should take **lead** responsibility for safeguarding and child protection (including online safety and understanding the filtering and monitoring systems and processes in place).” The DSL can delegate activities but not the responsibility for this area and whilst subject leads, e.g. for RSHE will plan the curriculum for their area, it is important that this ties into a whole-school approach.

1.5 What were the main online safety risks in Sept 2024, 25-26?

Current Online Safeguarding Trends

In our school over the past year, we have particularly noticed the following in terms of device use and abuse and types of online/device-based incidents which affect the wellbeing and safeguarding of our pupils/students: online social media apps e.g. Whatsapp especially group use. This includes a lack of parental responsibility in managing and supporting online use outside of school.

Nationally, some of the latest trends of the past twelve months are outlined below. These are reflected in this policy and the acceptable use agreements we use and seen in the context of the 5 Cs (see KCSIE for more details), a whole-school contextual safeguarding approach that incorporates policy and practice for curriculum, safeguarding and technical teams.

Self-generative artificial intelligence has become rapidly more accessible, with many pupils/students often having unfettered access to tools that generate text and images at home or in school. These tools not only represent a challenge in terms of accuracy when young people are genuinely looking for information (gen AI can be responsible for incorrect and sometime harmful information), but also in terms of plagiarism for teachers and above all safety - none of the mainstream tools have end-user safety settings, most have an age limit of 13 or even 18 and in spite of basic rude words not delivering results, will easily produce inappropriate material. Schools not only need to tackle this in terms of what comes into school but also educating young people and their parents on use of these tools in the home. Self-generative AI has also made it easier than ever to create sexualised images and deepfake videos. Whilst they may not be real, they have a devastating effect on a young person’s emotional wellbeing and physical safety, and can also be used to blackmail, humiliate and abuse. The Internet Watch Foundation has reported AI-generated imagery of child sexual abuse progressing at such a worrying rate.

Ofcom’s ‘Children and parents: media use and attitudes report 2024 has shown that YouTube remains the most used site or app among all under 18s and the reach of WhatsApp, TikTok and Snapchat increased yet further (especially with the minimum age for use of WhatsApp now 13). With children aged 3 - 17 spending an average 3 hours 5 minutes per day online, four in ten parents report finding it hard to control their child’s screentime. Notably, 45% of 8-11s feel that their parents’ screentime is too high, underlining the importance of modelling good behaviour.

Given the 13+ minimum age requirement on most social media platforms, it is notable that half (51%) of children under 13 use them. Despite age restrictions, four in ten admit to giving a fake age online, exposing them to content inappropriate for their age and increasing their risk of harm, with over a third (36%) of parents of all 3-17s saying they would allow their child to have a profile on sites or apps before they had reached the minimum age.

As a school we recognise that many of our children and young people are on these apps regardless of age limits, which are often misunderstood or ignored. We therefore will remind about best practice while remembering the reality for most of our pupils/students is quite different.

Primary-aged children: 25% of 3-4 year olds have access to their OWN mobile phone (let alone shared devices), rising to over 90 percent by the end of Primary School, and the vast majority have no safety controls or limitations to prevent harm or access to inappropriate material. At the same time, even 3 to 6 year olds are being tricked into 'self-generated' sexual content (Internet Watch Foundation Annual Report) while considered to be safely using devices in the home and the 7 to 10 year old age group remains the fastest growing for this form of child sexual abuse material.

Secondary-aged children: Over 95% of students have their own mobile phone by the end of Year 7, and the vast majority do not have safety controls or limitations to prevent harm of access to inappropriate material. This is particularly pertinent given that 141,910 cases of self-generated child sexual abuse material were found of 1113 year olds (Internet Watch Foundation Annual Report). These were predominantly (but importantly not only) girls; it is important also to recognise the increasing risk of sextortion, where older teenage boys have been financially exploited after being tricked into sharing intimate pictures online. This resulted in the National Crime Agency releasing an [alert](#) to all schools in Spring 2024.

Growing numbers of children and young people are using social media and apps such as snapchat as their source of news and information, with little attention paid to the facts or veracity of influencers sharing news. The alarming speed and scale at which misinformation about the attack in Southport (August 2024) was shared, resulting in Islamophobic and racist violence, rioting and looting across England is particularly concerning, with much of it fuelled by false online accusations about the assailant. Despite attempts by Police and national news to correct the misleading information, it racked up millions of views on social media sites like X and was actively promoted by several high-profile users with large followings.

There have also been significant safeguarding concerns where parents have filmed interactions with staff outside the school gates and posted this on social media, putting children and the wider school community at risk of harm. See nofilming.lgfl.net to find out more.

Cyber Security is an essential component in safeguarding children and now features within KCSIE. Sadly, the education sector remains a clear target for cyber-attacks, with the Cyber Security Breaches Survey 2024 highlighting an increase in school attacks

nationally, with 71% of secondary schools reporting a breach or attack in the past year, and 52% of primary schools.

1.6 How will this policy be communicated? HT

This policy can only impact upon practice if it is a (regularly updated) living document. It must be accessible to and understood by all stakeholders. It will be communicated in the following ways:

- Posted on the school website
- Part of school induction pack for all new staff (including temporary, supply and non-classroom-based staff and those starting mid-year)
- Integral to safeguarding updates and training for all staff
- Clearly reflected in the Acceptable Use Policies (AUPs) for staff, volunteers, contractors, governors, pupils/students and parents/carers (which must be in accessible language appropriate to these groups), which will be issued to whole school community, on entry to the school, annually and whenever changed, plus displayed in school

2. Contents

1. Introduction	4
2. Contents	8
3. Overview	9
4. Roles and responsibilities	10
5. Education and curriculum	10
6. Handling safeguarding concerns and incidents	11
7. CCTV	Error! Bookmark not defined.
8. Extremism	16
9. Data protection and cyber security	16
10. Appropriate filtering and monitoring	16
11. Messaging/commenting systems (incl. email, learning platforms & more)	18
12. Use of generative AI	20
13. Online storage or learning platforms	20
14. School website	20
15. Digital images and video	21
16. Social media	22
17. Device usage	24
Appendix – Roles	28

3. Overview

3.1 Aims **H.E.A.R.T.**

This policy aims to promote a whole school approach to online safety by:

- Setting out expectations for all school community members' online behaviour, attitudes and activities and use of digital technology (including when devices are offline)
- Helping safeguarding and senior leadership teams to have a better understanding and awareness of all elements of online safeguarding through effective collaboration and communication with technical colleagues (e.g. for filtering and monitoring), curriculum leads (e.g. RSHE) and beyond.
- Helping all stakeholders to recognise that online/digital behaviour standards (including social media activity) must be upheld beyond the confines of the school gates and school day, regardless of device or platform, and that the same standards of behaviour apply online and offline.
- Facilitating the safe, responsible, respectful and positive use of technology to support teaching & learning, increase attainment and prepare children and young people for the risks and opportunities of today's and tomorrow's digital world, to survive and thrive online.
- Helping school staff working with children to understand their roles and responsibilities to work safely and responsibly with technology and the online world:
 - for the protection and benefit of the children and young people in their care, and
 - for their own protection, minimising misplaced or malicious allegations and to better understand their own standards and practice.
 - for the benefit of the school, supporting the school ethos, aims and objectives, and protecting the reputation of the school and profession.
- Establishing clear structures by which online misdemeanours will be treated, and procedures to follow where there are doubts or concerns (with reference to other school policies such as Behaviour Policy or Anti-Bullying Policy)

3.2 Scope **H.A.R.T.**

This policy applies to all members of our school community (including teaching, supply and support staff, governors, volunteers, contractors, students/pupils, parents/carers, visitors and community users) who have access to our digital technology, networks and systems, whether on-site or remotely, and at any time, or who use technology in their school role.

4. Roles and responsibilities H.T

Our school is a community, and all members have a duty to behave respectfully online and offline, to use technology for teaching and learning and to prepare for life after school, and to immediately report any concerns or inappropriate behaviour, to protect staff, pupils/students, families and the reputation of the school. We learn together, make honest mistakes together and support each other in a world that is online and offline at the same time.

Depending on their role, all members of the school community should **read the relevant section in Annex A of this document** that describes individual roles and responsibilities. Please note there is one for All Staff which must be read even by those who have a named role in another section. There are also pupil/student, governor, etc role descriptions in the annex. All staff have a key role to play in feeding back on potential issues.

5. Education and curriculum H.E.A.R.T

Despite the risks associated with being online, our school recognises the opportunities and benefits of children being online. Technology is a fundamental part of our adult lives and so developing the competencies to understand and use it, are critical to children's later positive outcomes. The choice to use technology in school will always be driven by pedagogy and inclusion.

It is important that schools establish a carefully sequenced curriculum for online safety that develops competencies (as well as knowledge about risks) and builds on what pupils/students have already learned and identifies subject content that is appropriate for their stage of development.

As well as teaching about the underpinning knowledge and behaviours that can help pupils/students navigate the online world safely and confidently regardless of the device, platform or app, [Teaching Online Safety in Schools](#) recommends embedding teaching about online safety and harms through a whole school approach and provides an understanding of these risks to help tailor teaching and support to the specific needs of pupils/students, including vulnerable pupils/students.

RSHE guidance also recommends that schools assess teaching to "identify where pupils need extra support or intervention [through] tests, written assignments or self-evaluations, to capture progress."

The teaching of online safety features in these particular areas of curriculum delivery:

- Relationships education, relationships and sex education (RSE) and health (also known as RSHE or PSHE) [Please be aware that during the 2024/5 school year the subject may be subject to significant changes of scope and content following the 2024 consultation.]
- Computing
- Citizenship

However, as stated previously, it is the role of all staff to identify opportunities to thread online safety through all school activities, both outside the classroom and within the curriculum, supporting curriculum/stage/subject leads, and making the most of unexpected learning opportunities as they arise.

Whenever overseeing the use of technology (devices, the internet, generative AI tools, etc) in school or setting as homework tasks, all staff should remind/encourage sensible use, monitor what pupils/students are doing and consider potential risks and the age appropriateness of tasks. This includes supporting them with search skills, reporting and accessing help, critical thinking (e.g. disinformation, misinformation and fake news), access to age-appropriate materials and signposting, and legal issues such as copyright and data law.

At our school, we recognise that online safety and broader digital resilience must be thread throughout the curriculum and that is why have a unit of online safety in our PSHE/Safeguarding curriculum and it is also taught through our computing curriculum. Annual reviews of curriculum plans / schemes of work (including for SEND pupils/students) take place and are used as an opportunity to follow this framework more closely in its key areas.

This is done within the context of an annual online safety audit, which is a collaborative effort led by members of the safeguarding team and it is completed using the LGfL School Online Safety Audit and Risk Assessment framework.

We communicate with parents and carers about how we support pupils/students with their online safety learning, including what their children are being asked to do online and the sites they will be asked to access by

Handling safeguarding concerns and incidents T

It is vital that all staff recognise that online safety is a part of safeguarding and so concerns must be handled in the same way as any other safeguarding concern, safeguarding is often referred to as a jigsaw puzzle, so all stakeholders should speak to the safeguarding lead with any concerns (no matter how small these seem) to contribute to the overall picture or highlight what might not yet be a problem.

Support staff will often have a unique insight and opportunity to find out about issues first in the playground, corridors, toilets and other communal areas outside the classroom.

School procedures for dealing with online safety will be mostly detailed in the following policies (primarily in the first key document):

- Safeguarding and Child Protection Policy
- Anti-Bullying Policy
- Behaviour Policy (including school sanctions)

- Acceptable Use Policies
- Data Protection Policy, agreements and other documentation (e.g. privacy statement and consent forms for data sharing, image use etc)
- Cyber Security
- ICT Regulations

This school commits to take all reasonable precautions to safeguard pupils/students online but recognises that incidents will occur both inside school and outside school (and that those from outside school will continue to impact pupils/students when they come into school or during extended periods away from school). All members of the school are encouraged to report issues swiftly to allow us to deal with them quickly and sensitively through the school's escalation processes.

Any suspected online risk or infringement should be reported to the designated safeguarding lead as soon as possible on the same day. The reporting member of staff will ensure that a record is made of the concern on CPOMs, via yellow reporting form or verbally to DSL.(SENSIO reviewed by Head Teacher) this includes any concerns raised by the filtering and monitoring systems (see section further on in this policy for more information).

Any concern/allegation about staff misuse is always (similar to any safeguarding concern) referred directly to the Headteacher, unless the concern is about the Headteacher in which case the complaint is referred to the Chair of Governors (who will inform LDST's CEO) and the LADO (Local Authority's Designated Officer). Staff may also use the NSPCC Whistleblowing Helpline 0800 028 0285.

Our school will actively seek support from other agencies as needed (i.e. Trust DSL, the local authority, School Improvement Liverpool, UK Safer Internet Centre's Professionals' Online Safety Helpline (POSH), NCA CEOP, Prevent Officer, Police, IWF and Harmful Sexual Behaviour Support Service). The DfE guidance [Behaviour in Schools, advice for headteachers and school staff](#) September 2024 provides advice and related legal duties including support for pupils and powers of staff when responding to incidents – see pages 31-33 for guidance on child on child sexual violence and harassment, behaviour incidents online and mobile phones.

We will inform parents/carers of online safety incidents involving their children, and the Police where staff or pupils/students engage in or are subject to behaviour which we consider is particularly concerning or breaks the law.

Our school will ensure all online safety reporting procedures are sustainable for any unforeseen periods of closure.

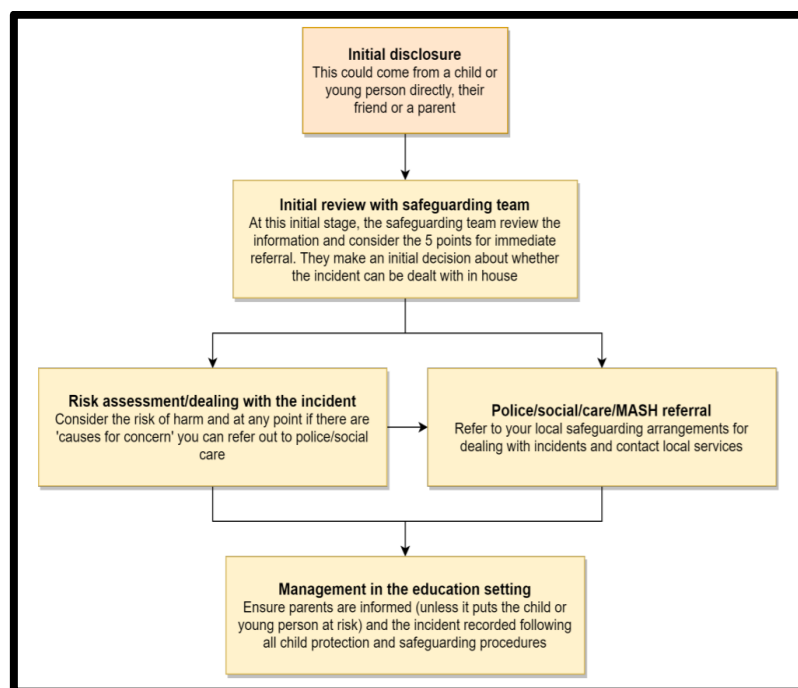
6.1 Nudes – sharing nudes and semi-nudes H.T.

All schools (regardless of phase) should refer to the UK Council for Internet Safety (UKCIS) guidance on sexting - now referred to as [Sharing nudes and semi-nudes: advice for education settings](#).

There is a one-page overview called [Sharing nudes and semi-nudes: how to respond to an incident](#) for all staff (not just classroom-based staff) to read, in recognition of the fact that it is mostly someone other than the designated safeguarding lead (DSL) or online safety lead to first become aware of an incident, and it is vital that the correct steps are taken. Staff other than the DSL must not attempt to view, share or delete the image or ask anyone else to do so, but to go straight to the DSL.

It is important that everyone understands that whilst the sharing of nudes involving children is illegal, students should be encouraged and supported to talk to members of staff if they have made a mistake or had a problem in this area. The UKCIS guidance seeks to avoid unnecessary criminalisation of children.

Our school DSL will use the full guidance document, [Sharing nudes and semi-nudes – advice for educational settings](#) to decide next steps and whether other agencies need to be involved (see flow chart below from the UKCIS guidance) and next steps regarding liaising with parents and supporting pupils/students.




The following document may also be helpful for DSLs in making their decision about whether to refer a concern about sharing of nudes:

SAFEGUARDING QUESTION TIME


Q: WHEN SHOULD WE REFER NUDE SHARING?
A: IMMEDIATELY *IF* THE IMAGE/VIDEO:

- involves an adult
- is potentially coerced, blackmailed or groomed or concerns about capacity to consent
- might depict sexual acts unusual for their developmental stage or violent
- involves sexual acts / under 13s
- or the young person is at immediate risk of harm[...], suicidal or self-harming

Text simplified, taken from page 20 of 'Sharing Nudes and Semi-Nudes', UKCIS – search gov.uk



"We recommend DSLs read the entire UKCIS document; there is much more to know than this, and many helpful resources including training, scenarios and further guidance. Note also the one-pager for all staff!"


SafeguardED

6.2 Priority Areas **H.A.T.**

6.2.1 Upskirting

It is important that everyone understands that upskirting (taking a photo of someone under their clothing, not necessarily a skirt) is a criminal offence and constitutes a form of sexual harassment as highlighted in Keeping Children Safe in Education. As with other forms of child-on-child abuse pupils/students can come and talk to members of staff if they have made a mistake or had a problem in this area.

6.2.2. Bullying

Online bullying (which may also be referred to as cyber bullying), including incidents that take place outside of school should be treated like any other form of bullying and the school bullying policy should be followed, this includes issues arising from banter.

Bullying policy found on school website: [www. https://glazebury.eschools.co.uk/](https://glazebury.eschools.co.uk/)

It is important to be aware that sometimes fights are being filmed, live streamed or shared online and fake profiles are used to bully children in the name of others. When considering bullying, staff will be reminded of these issues.

Materials to support teaching about bullying and useful Department for Education guidance and case studies are at bullying.lgfl.net

6.2.3 Child-on-child sexual violence and sexual harassment H.T

Any incident of sexual harassment or violence (online or offline) should be reported to the DSL who will follow the guidance in KCSIE. Staff should work to foster a zero-tolerance culture and maintain an attitude of 'it could happen here'. The guidance stresses that schools must take all forms of sexual violence and harassment seriously, explaining how it exists on a continuum and that behaviours incorrectly viewed as 'low level' are treated seriously and not allowed to perpetuate. The document makes specific reference to behaviours such as bra-strap flicking and the careless use of language. This will be discussed in staff training.

6.3 Misuse of school technology (devices, systems, networks or platforms) H.T

Clear and well communicated rules and procedures are essential to govern pupil and adult use of school networks, connections, internet connectivity and devices, cloud platforms and social media (both when on school site and outside of school).

These are defined in the relevant Acceptable Use Policy as well as in this document, for example in the sections relating to the professional and personal use of school platforms/networks/clouds, devices and other technology, as well as to BYOD (bring your own device) policy.

Where pupils/students contravene these rules, the school behaviour policy will be applied; where staff contravene these rules, action will be taken as outlined in the staff safeguarding code for adults/handbook.

It will be necessary to reinforce these as usual at the beginning of any school year but also to remind pupils/students that **the same applies for any home learning** that may take place.

Further to these steps, our school reserves the right to withdraw – temporarily or permanently – any or all access to such technology, or the right to bring devices onto school property.

6.4 Social media incidents H.T.

Social media incidents involving pupils/students are often safeguarding concerns and should be treated as such and staff should follow the safeguarding policy. Other policies that govern these types of incidents are the school's Acceptable Use Policies/social media policy/online safety.

Breaches will be dealt with in line with the school behaviour policy (for pupils) or staff safeguarding code for adults/handbook (for staff). See the social media section later in this document for rules and expectations of behaviour for children and adults in the school community.

Further to this, where an incident relates to an inappropriate, upsetting, violent or abusive social media post by a member of the school community, we will request that the post be deleted and will expect this to be actioned promptly.

Where an offending post has been made by a third party, the school may report it to the platform it is hosted on, and may contact the Professionals' Online Safety Helpline, POSH, (run by the UK Safer Internet Centre) for support or help to accelerate this process.

6. Extremism H.T.

The school has obligations relating to radicalisation and all forms of extremism under the Prevent Duty. Staff will not support or promote extremist organisations, messages or individuals, give them a voice or opportunity to visit the school, nor browse, download or send material that is considered offensive or of an extremist nature. We ask for parents' support in this also, especially relating to social media, where extremism and hate speech can be widespread on certain platforms.

7. Data protection and cyber security H

All pupils, staff, governors, volunteers, contractors and parents are bound by the school's data protection policy and cyber security policy which can be found here. www.glazeburieschools.co.uk It is important to remember that there is a close relationship between both data protection and cyber security and a school's ability to effectively safeguard children. Schools are reminded of this in KCSIE which also refers to the DfE Standards of Cyber Security for Schools and Colleges.

Schools should remember that data protection does not prevent, or limit, the sharing of information for the purposes of keeping children safe. As outlined in *Data protection in schools*, 2023, "It's not usually necessary to ask for consent to share personal information for the purposes of safeguarding a child." And in KCSIE 2024, "The Data Protection Act 2018 and UK GDPR do not prevent the sharing of information for the purposes of keeping children safe. Fears about sharing information must not be allowed to stand in the way of the need to safeguard and promote the welfare and protect the safety of children."

8. Appropriate filtering and monitoring H.T.

The designated safeguarding lead (DSL) has lead responsibility for filtering and monitoring and works closely with our Trust Corporate Services Director and Techminder, our IT support provider, to implement the DfE filtering and monitoring standards, which require schools to:

- identify and assign roles and responsibilities to manage filtering and monitoring systems.
- review filtering and monitoring provision at least annually.
- block harmful and inappropriate content without unreasonably impacting teaching and learning.
- have effective monitoring strategies in place that meet their safeguarding needs.

We look to provide 'appropriate filtering and monitoring (as outlined in Keeping Children Safe in Education) at all times.

We ensure ALL STAFF are aware of filtering and monitoring systems and play their part in feeding back about areas of concern, potential for pupils/students to bypass systems and any potential overblocking. They can submit concerns at any point via e-mail and will be asked for feedback at the time of the regular checks which will now take place.

Technical and safeguarding colleagues work together closely to carry out annual reviews and check and also to ensure that the school responds to issues and integrates with the curriculum.

We carry out both weekly and termly checks to ensure all systems are in operation, functioning as expected, etc and an annual review as part of an online safety audit of strategy, approach etc. More details of both documents and results are available on request dependent on staff roles from K Mowbray Head Teacher/DSL

Safe Search is enforced on any accessible search engines on all devices.

We recommend the use of Google.

Our YouTube mode is restricted to "schools"

Out of hours, our policies are:

- for filtering devices, we do not run reports due to them being very technical and difficult to understand from the gateway device. The Trust are looking at a piece of software which will make these easier to read and understand for non-technical persons. - for monitoring devices, we use Senso. cloud and the violations are sent in real time. We do not monitor this over the weekend as no student devices are used offsite.
- All devices offsite will be monitored but not filtered. Currently there are no student devices that are offsite but if this was the case, we enable senso.cloud's web filtering policy. This is not enabled on all devices due to "double filtering" and causing issues on the corporate network.

Staff will be reminded of the systems in place and their responsibilities at induction and start of year safeguarding as well as via AUPs and regular training reminders in the light of the annual review and regular checks that will be carried out.

The DSL checks filtering reports and notifications

At our school:

- web filtering and web monitoring is provided by Techminder -on school site and
- changes can be made by K Mowbray HT, S Sharma DHT, K Holcroft SBM
- overall responsibility is held by the
- technical support and advice, setup and configuration are from Tech minder
- regular checks are made half termly by Techminder and DSL to ensure filtering is still active and functioning everywhere. These are evidenced BY report to Governors
- an annual review is carried out by DSL/Trust and Tech minder

and takes any necessary action as a result.

According to the DfE standards, "a variety of monitoring strategies may be required to minimise safeguarding risks on internet connected devices and may include:

- physically monitoring by staff watching screens of users
- live supervision by staff on a console with device management software
- network monitoring using log files of internet traffic and web access
- individual device monitoring through software or third-party services

At our school we use SENSO for monitoring all technology in school. This is managed by our IT company Techminder.

Note that the DfE standards include statements such as "If mobile or app technologies are used then you should apply a technical monitoring system to the devices"

9. Messaging/commenting systems (incl. e-mail, learning platforms & more)

11.1 Authorised systems

- Pupils/students at our school communicate with each other and with staff using Class dojo , email – Glazeburyprimary.Teacher2pldst.org.uk, soon to transfer to school spider.
- Staff at this school use the e-mail system provided by our Trust for all school e-mails. They **never use a personal/private email account (or other messaging platform)** to communicate with children or parents, or to colleagues when relating to school/child data, using a non-school-administered system. Staff are permitted to use this e-mail system to communicate with parents, external organisations but not with under 18s.

- Staff at this school use Class dojo to communicate with Parents , sometime this is through Teacher 2parents, and Trust Microsoft email addresses.
- Staff at this school also use Microsoft Teams to communicate with other staff.

Any systems above are centrally managed and administered by the school or authorised IT partner (i.e. they can be monitored/audited/viewed centrally; are not private or linked to private accounts). This is for the mutual protection and privacy of all staff, pupils/students and parents, supporting safeguarding best-practice, protecting children against abuse, staff against potential allegations and in line with UK data protection legislation.

Use of any new platform or app with communication facilities or any child login or storing school/child data must be approved in advance by the school and centrally managed. Approval is to be sought from the Trust Corporate Services Director.

Any unauthorised attempt to use a different system may be a safeguarding concern or disciplinary matter and should be notified to the DSL (if by a child) or to the Headteacher (if by a staff member).

Where devices have multiple accounts for the same app, mistakes can happen, such as an e-mail being sent from, or data being uploaded to, the wrong account. If a private account is used for communication or to store data by mistake, the DSL/Headteacher/Data Protection Lead/DPO (the particular circumstances of the incident will determine whose remit this is) should be informed immediately.

11.2 Behaviour / usage principles of messaging/commenting systems

More detail for all the points below are given in the Social media section of this policy as well as the school's acceptable use agreements, behaviour policy and staff safeguarding code for adults.

- Appropriate behaviour is expected at all times, and the system should not be used to send inappropriate materials or language which is or could be construed as bullying, aggressive, rude, insulting, illegal or otherwise inappropriate, or which (for staff) might bring the school into disrepute or compromise the professionalism of staff.
- Data protection principles will be followed at all times when it comes to all school communications, in line with the school Data Protection Policy and only using the authorised systems mentioned above.

Pupils/students and staff are allowed to use the e-mail system for reasonable (not excessive, not during lessons) personal use but should be aware that all use is monitored, their e-mails may be read and the same rules of appropriate behaviour apply at all times. E-mails using inappropriate language, images, malware or to adult sites may be blocked and not arrive at their intended destination and will be dealt with according to the appropriate policy and procedure.

10. Use of generative AI

At our school, we acknowledge that generative AI platforms (e.g. ChatGPT or Bard for text creation or the use of Co-Pilot or Adobe Firefly to create images and videos) are becoming widespread. We are aware of and follow the [DfE's guidance](#) on this. In particular:

- We will talk about the use of these tools with pupils, staff and parents – their practical use as well as their ethical pros and cons. We are aware that there will be use of these apps and exposure to AI creations on devices at home for some students – these experiences may be both positive/creative and also negative (inappropriate data use, misinformation, bullying, deepfakes, undressing apps).
- The use of any generative AI in Exams, or to plagiarise and cheat is prohibited, and the Behaviour Policy will be used for any pupil found doing so.
- Staff are currently permitted to use Microsoft copilot to generate planning, this must meet with national curriculum guidelines and adhere to existing planning expectations. Marking is undertaken as per our Feedback and Marking Policy and does not include the use of AI.
- New platforms are vetted by senior staff and approved by the Head Teacher.
- Children are not expected to use AI to complete homework.
- The use of AI as part of the curriculum is currently being devised by Trust and the government Curriculum Review.

11. Online storage or learning platforms

All the principles outlined above also apply to any system to which you log in online to conduct school business, whether it is to simply store files or data (an online 'drive') or collaborate, learn, teach, etc. In school this includes

For all these, it is important to consider data protection and cyber security before adopting such a platform or service and at all times when using it. Any new platforms will be approved by the Trust Corporate Services Director.

12. School website

The school website is a key public-facing information portal for the school community (both existing and prospective stakeholders) with a key reputational value. The Headteacher and Governors have delegated the day-to-day responsibility of updating the content of the website and ensuring compliance with DfE stipulations to School Business Manager K.Holcroft. Our Trust provides a website audit document which our school uses to ensure compliance.

The website is managed and hosted by e.schools.

Where staff submit information for the website, they are asked to remember that schools have the same duty as any person or organisation to respect and uphold copyright law – schools have been fined thousands of pounds for copyright breaches.

Sources must always be credited, and material only used with permission. There are many open-access libraries of public-domain images/sounds etc that can be used. Finding something on Google or YouTube does not mean that copyright has been respected. If in doubt, check with K. Mowbray Head Teacher or Alison Tennant LDST.

13. Digital images and video

When a pupil/student joins the school, parents/carers are asked if they give consent for their child's image to be captured in photographs or videos, for what purpose (beyond internal assessment, which does not require express consent) and for how long. In Year 8, and at which point all students are aged 12+, consent is sought directly from the student if they have the relevant capacity and maturity to understand what they are agreeing to. Parents/carers and students (12+) answer as follows:

- For displays around the school
- For the newsletter
- For use in paper-based school marketing
- For online prospectus or websites
- For social media
- For a specific high-profile image for display or publication

Whenever a photo or video is taken/made, the member of staff taking it will check the latest database in relation to consent before using it for any purpose.

Any pupils/students shown in public facing materials are rarely identified with more than first name. Occasionally, a pupil/student may be holding a certificate of achievement or work they have produced with their name included – it is this possibility that is detailed in our consent forms. Photo file names/tags do not include full names to avoid accidentally sharing them.

All staff are governed by their contract of employment and the school's Acceptable Use Policy, which covers the use of mobile phones/personal equipment for taking pictures of pupils/students, and where these are stored. At our school members of staff may occasionally (i.e. only when school devices are temporarily not available or there are insufficient devices) use personal phones to capture photos or videos of pupils/students, but these will be appropriate, linked to school activities, taken without secrecy and not in a one-to-one situation, and always moved to school storage as soon as possible, after which they are deleted from personal devices or cloud services (NB – many phones automatically back up photos).

Photos are stored on the school network/cloud platform in line with the retention schedule and the school Data Protection Policy. The school Business manager is responsible for checking images/video on all school devices annually. Any concerns about the nature of these images will be reported to the DSL

Staff and parents are reminded annually about the importance of not sharing images on social media or otherwise without permission, due to reasons of child protection (e.g. children who are looked after by the local authority may have restrictions in place for their own protection), data protection, religious or cultural reasons, or simply for reasons of personal privacy. Further detail on this can be found in the Data Protection Policy.

We encourage young people to think about their online reputation and digital footprint, so we should be good adult role models by not oversharing (or providing embarrassment in later life – and it is not for us to judge what is embarrassing or not).

Pupils/students are taught about how images can be manipulated in their online safety education programme and also taught to consider how to publish for a wide range of audiences which might include governors, parents or younger children.

Pupils/students are advised to be very careful about placing any personal photos on social media. They are taught to understand the need to maintain privacy settings so as not to make public, personal information.

Pupils/students are taught that they should not post images or videos of others without their permission. We teach them about the risks associated with providing information with images (including the name of the file), that reveals the identity of others and their location. We teach them about the need to keep their data secure and what to do if they / or a friend are subject to bullying or abuse.

14. Social media

16.1 Our SM presence

Our school works on the principle that if we don't manage our social media reputation, someone else will.

Online Reputation Management (ORM) is about understanding and managing our digital footprint (everything that can be seen or read about the school online). Few parents will apply for a school place without first Googling the school, and the Ofsted pre-inspection check includes monitoring what is being said online.

Negative coverage almost always causes some level of disruption. Up to half of all cases dealt with by the Professionals Online Safety Helpline (POSH: helpline@saferinternet.org.uk) involve schools' (and staff members') online reputation.

Accordingly, we manage and monitor our social media footprint carefully to know what is being said about the school and to respond to criticism and praise in a fair, responsible manner.

The school Business Manager is responsible for managing our social media accounts and checking our Wikipedia and Google reviews and other mentions online.

16.2 Staff, pupils'/students' and parents' SM presence

Social media (including all apps, sites and games that allow sharing and interaction between users) is a fact of modern life, and as a school, we accept that many parents, staff and pupils/students will use it. However, as stated in the acceptable use policies which all members of the school community sign, we expect everybody to behave in a positive manner, engaging respectfully with the school and each other on social media, in the same way as they would face to face.

This positive behaviour can be summarised as not making any posts which are or could be construed as bullying, aggressive, rude, insulting, illegal or otherwise inappropriate, or which might bring the school or (particularly for staff) teaching profession into disrepute. This applies both to public pages and to private posts, e.g. parent chats, pages or groups.

If parents have a concern about the school, we urge them to contact us directly and in private to resolve the matter. If an issue cannot be resolved in this way, the school complaints procedure should be followed. Sharing complaints on social media is unlikely to help resolve the matter, but can cause upset to staff, pupils/students and parents, also undermining staff morale and the reputation of the school (which is important for the pupils/students we serve).

Many social media platforms have a minimum age of 13 (note that WhatsApp is 16+), and schools regularly deal with issues arising on social media involving pupils/students under the age of 13. We ask parents to respect age ratings on social media platforms wherever possible and not encourage or condone underage use.

However, the school has to strike a difficult balance of not encouraging underage use at the same time as needing to acknowledge reality in order to best help our pupils/students to avoid or cope with issues if they arise. Online safety lessons will look at social media and other online behaviour, how to be a good friend online and how to report bullying, misuse, intimidation or abuse. However, children will often learn most from the models of behaviour they see and experience, which will often be from adults.

Parents can best support this by talking to their children about the apps, sites and games they use (you don't need to know them – ask your child to explain it to you), with whom, for how long, and when (late at night / in bedrooms is not helpful for a good night's sleep and productive teaching and learning at school the next day).

Although our school has official social media accounts and will respond to general enquiries about the school, we ask parents/carers not to use these channels, especially not to communicate about their children or to make requests for information (subject access and Freedom of Information Requests).

E-mail is the official electronic communication channel between parents and the school. Social media, including chat apps such as WhatsApp, are not appropriate for school use.

Where social media is more widely used as part of school life, e.g. if a Facebook class group is allowed, then at least a second unrelated teacher will be part of the group to monitor activity between the teacher and students

As outlined in the Acceptable Use Policies, pupils/students are not allowed¹ to be 'friends' with or make a friend request² to any staff, governors, volunteers and contractors or otherwise communicate via social media.

Pupils/students are discouraged from 'following' staff, governor, volunteer or contractor public accounts (e.g. following a staff member with a public Instagram account) as laid out in the AUPs. However, we accept that this can be hard to control (but this highlights the need for staff to remain professional in their private lives). In the reverse situation, however, staff must not follow such public pupil/student accounts.

Staff are reminded that they are obliged not to bring the school or profession into disrepute and the easiest way to avoid this is to have the strictest privacy settings and avoid inappropriate sharing and oversharing online. They should never discuss the school or its stakeholders on social media and be careful that their personal opinions might not be attributed to the school, trust or local authority, bringing the school into disrepute.

The serious consequences of inappropriate behaviour on social media are underlined by the fact that there has been a considerable number of Prohibition Orders issued by the Teacher Regulation Agency to teaching staff that involved misuse of social media/technology.

All members of the school community are reminded that particularly in the context of social media, it is important to comply with the school policy on Digital images and video and consent is sought before uploading photographs, videos or any other information about other people. Parents must **not** covertly film or make recordings of any interactions with pupils/students or adults in schools or near the school gates, nor share images of other people's children on social media as there may be cultural or legal reasons why this would be inappropriate or even dangerous. The school sometimes uses images/video of children for internal purposes such as recording attainment, but it will only do so publicly if parents have given consent on the relevant form.

15. Device usage H.T

AUPs remind those with access to school devices about rules on the misuse of school technology – devices used at home should be used just like if they were in full view of a teacher or colleague. Please read the following in conjunction with those AUPs and

¹ Exceptions may be made, e.g. for pre-existing family links, but these must be approved by the Headteacher, and should be declared upon entry of the pupil/student or staff member to the school).

² Any attempt to do so may be a safeguarding concern or disciplinary matter and should be notified to the DSL (if by a child) or to the Headteacher (if by a staff member).

the sections of this document which impact upon device usage, e.g. copyright, data protection, social media, misuse of technology, and digital images and video.

17.1 Personal devices including wearable technology and bring your own device (BYOD)

- **Pupils/students** in year 6 only, are allowed to bring in mobile phones for emergency use only. These will be handed in to the teacher immediately on entering the class and put away. They will be handed back at the end of the day and cannot be used on the school grounds without teacher permission (for ringing parent for example to confirm pick up). Forms are required to be completed by Parents regarding this available upon request and from school office.
- Smartwatches are not allowed in our school. During lessons, phones must remain turned off at all times, unless the teacher has given express permission as part of the lesson. Any attempt to use a phone in lessons without permission or to take illicit photographs or videos will lead to the withdrawal of mobile privileges. Important messages and phone calls to or from parents can be made at the school office, which will also pass on messages from parents to pupils/students in emergencies. Our approach to pupils/students using mobile phones is in line with DfE – please refer to our Mobile Phone Policy.
- **All staff who work directly with children** should leave their mobile phones on silent and only use them in private staff areas during school hours. See also the 'Digital images and video' section of this document and the school data protection and cyber security policies. Child/staff data should never be downloaded onto a private phone. If a staff member is expecting an important personal call when teaching or otherwise on duty, they may leave their phone with the school office to answer on their behalf or ask for the message to be left with the school office, Permission must be gained from Head Teacher or Deputy Head.
- **Staff or pupils/students who need a mobile device to help manage a medical condition** should discuss this with the Headteacher and school's approach will be based on relevant risk assessments and dialogues with parents and other key professionals.
- **Volunteers, contractors, governors** should leave their phones in their pockets and turned off. ***Under no circumstances should they be used in the presence of children or to take photographs or videos.*** If this is required (e.g. for contractors to take photos of equipment or buildings), permission of the headteacher should be sought (the headteacher may choose to delegate this) and this should be done in the presence of a member staff.
- **Parents/Carers** are asked to leave their phones in their pockets and turned off when they are on site. They should ask permission before taking any photos, e.g. of displays in corridors or classrooms, and avoid capturing other children. Please see the Digital images and video section of this document for more information about filming and photography at school events. Parents are asked not to call pupils/students on their mobile phones during the school day; urgent messages can be passed via the school office.

- Where BYOD is allowed, neither staff nor students are allowed to use a mobile hotspot to provide internet to the device as this would potentially bypass filtering in contravention of AUPs.

17.2 Use of school devices H.T.

Staff and pupils/students are expected to follow the terms of the school acceptable use policies for appropriate use and behaviour when on school devices, whether on site or at home.

School devices are not to be used in any way which contravenes AUPs, behaviour policy / staff safeguarding code for adults.

Wi-Fi is accessible for use of BYOD, guest networks and school-related internet use/ limited personal use within the framework of the acceptable use policy. All such use is monitored.

School devices for staff or pupil/students are restricted to the apps/software installed by the school, whether for use at home or school, and may be used for learning and reasonable as well as appropriate personal use.

All and any usage of devices and/or systems and platforms may be tracked.

17.3 Trips / events away from school H.T

For school trips/events away from school, teaching staff may be issued with a school duty phone and this number will be used for any authorised or emergency communications with pupils/students and parents. Alternatively the trip leaders phone may be used with the Head Teachers permission, this is for emergency use only and no photos should be collected and stored on the personal device. Any deviation from this policy (e.g. by mistake or because the school phone will not work) will be notified immediately to the Headteacher. Teaching staff using their personal phone in an emergency will ensure that the number is hidden to avoid a parent or pupil/student accessing a member of staff's private phone number. The phone must also require a password and /or fingerprint lock to the device. Where possible school I Pads will be taken and photos loaded onto this device for deletion when back in school.

If on trips pupils/students are encouraged to connect to another organisation's Wi-Fi network, staff must be aware that other connections may not be as well controlled (e.g. via filtering and monitoring) as the network and systems in school and therefore staff are responsible for risk assessing and managing such situations. Staff should seek advice from the DSL where necessary.

School will ensure that the authorised systems we use to communicate with parents as outlined within policy include any systems used in exceptional circumstances such as on trips if we notify parents of trip updates or status of arriving back at school and that these are DP compliant.

17.4 Searching and confiscation H.T.

In line with the DfE guidance '[Searching, screening and confiscation: advice for schools](#)', the Headteacher and staff authorised by them have a statutory power to search pupils/students property on school premises. This includes the content of mobile phones and other devices, for example as a result of a reasonable suspicion that a device contains illegal or undesirable material, including but not exclusive to sexual images, pornography, violence or bullying.

Full details of the school's search procedures are available in the school Behaviour Policy.

Appendix – Roles **H.T.**

Please read the relevant roles & responsibilities section from the following pages.

All school staff must read the “All Staff” section as well as any other relevant to specialist roles.

All staff

All staff should sign and follow the staff acceptable use policy in conjunction with this policy, the school’s main child protection policy, the safeguarding code for adults, staff handbook and relevant parts of Keeping Children Safe in Education to support a whole-school safeguarding approach.

They must report any concerns, no matter how small, to the designated safeguarding lead as named in the AUP, maintaining an awareness of current online safety issues (see the start of this document for issues in 2024) and guidance (such as KCSIE), modelling safe, responsible and professional behaviours in their own use of technology at school and beyond and avoiding scaring, victim-blaming language.

Staff should also be aware of the DfE standards for filtering and monitoring and play their part in feeding back to the DSL about overblocking, gaps in provision or pupils bypassing protections. All staff are also responsible for the physical monitoring of pupils/students’ online devices during any session/class they are working within.

Headteacher (and CEO in relation to Trustees)

Key responsibilities:

- Foster a culture of safeguarding where online safety is fully integrated into whole-school safeguarding.
- Oversee and support the activities of the designated safeguarding lead team and ensure they work technical colleagues to complete an online safety audit in line with KCSIE (including technology in use in the school).
- Undertake training in offline and online safeguarding, in accordance with statutory guidance and Local Safeguarding Children Partnership support and guidance.
- Ensure ALL staff undergo safeguarding training (including online safety) at induction and with regular updates and that they agree and adhere to policies and procedures.
- Ensure ALL governors and trustees undergo safeguarding and child protection training and updates (including online safety) to provide strategic challenge and oversight into policy and practice and that governors are regularly updated on the nature and effectiveness of the school’s arrangements. *LDST has procured online safety training via National Online Safety.*

- Ensure the school implements and makes effective use of appropriate ICT systems and services including school-safe filtering and monitoring, protected email systems and that all technology including remote systems are implemented according to child-safety first principles.
- Better understand, review and drive the rationale behind decisions in filtering and monitoring as per the DfE standards—through regular liaison with technical colleagues and the DSL– in particular understand what is blocked or allowed for whom, when, and how as per KCSIE. ([LGfL's Safeguarding Shorts: Filtering for DSLs and SLT](#) twilight provides an overview).
- Liaise with the designated safeguarding lead on all online safety issues which might arise and receive regular updates on school issues and broader policy and practice information.
- Support safeguarding leads and technical staff as they review protections for pupils/students in the home and remote-learning procedures, rules and safeguards.
- Take overall responsibility for data management and information security ensuring the school's provision follows best practice in information handling; work with the Trust Corporate Services Director, Trust DPO, DSL and governors to ensure a compliant framework for storing data but helping to ensure that child protection is always put first and data-protection processes support careful and legal sharing of information.
- Understand and make all staff aware of procedures to be followed in the event of a serious online safeguarding incident.
- Ensure suitable risk assessments are undertaken so the curriculum meets needs of pupils, including risk of children being radicalised.
- Ensure the school website meets statutory requirements.

Designated Safeguarding Lead

Key responsibilities (remember the DSL can delegate certain online safety duties but not the overall responsibility; this assertion and all quotes below are from Keeping Children Safe in Education):

- The DSL should “take **lead responsibility** for safeguarding and child protection (**including online safety and understanding the filtering and monitoring** systems and processes in place).
- Ensure “An effective whole school approach to online safety as per KCSIE.
- Ensure the school is complying with the DfE’s standards on filtering and monitoring. ([LGfL's Safeguarding Shorts: Filtering for DSLs and SLT](#) twilight provides a quick overview and there is lots of information for DSLs at [safefiltering.lgfl.net](#) and [appropriate.lgfl.net](#)).
- As part of this, DSLs will work with technical teams to carry out reviews and checks on filtering and monitoring, to compile the relevant documentation and ensure that safeguarding and technology work together. This will include a decision on relevant YouTube mode and preferred search engine/s etc: registers as “Schools”.

- Where online safety duties are delegated and in areas of the curriculum where the DSL is not directly responsible but which cover areas of online safety (e.g. RSHE), ensure there is regular review and open communication and that the DSL's clear overarching responsibility for online safety is not compromised or messaging to pupils confused.
- Ensure ALL staff and supply staff undergo safeguarding and child protection training (including online safety) at induction and that this is regularly updated.
 - this must include filtering and monitoring and help them to understand their roles.
 - all staff must read KCSIE Part 1 and all those working with children also Annex B – translations are available in 13 community languages at kcsietranslate.lgfl.net (the condensed Annex A can be provided instead to staff who do not directly work with children if this is better)
 - cascade knowledge of risks and opportunities throughout the Trust
- Ensure that ALL governors and trustees undergo safeguarding and child protection training (including online safety) at induction to enable them to provide strategic challenge and oversight into policy and practice and that this is regularly updated (LGfL's Safeguarding Training for school governors is free to all governors at safetraining.lgfl.net).
- Take day-to-day responsibility for safeguarding issues and be aware of the potential for serious child protection concerns.
- Be mindful of using appropriate language and terminology around children when managing concerns, including avoiding victim-blaming language (see spotlight.lgfl.net for a CPD resource to use with staff and for further support).
- Remind staff of safeguarding considerations as part of a review of remote learning procedures and technology, including that the same principles of online safety and behaviour apply.
- Work closely with SLT, staff and technical colleagues to complete an online safety audit including technology in use in the school (see LGfL's template with questions to use at onlinesafetyaudit.lgfl.net).
- Work with the headteacher, DPO and governors to ensure a compliant framework for storing data but helping to ensure that child protection is always put first, and data-protection processes support careful and legal sharing of information.
- Stay up to date with the latest trends in online safeguarding and "undertake Prevent awareness training." (see safetraining.lgfl.net and prevent.lgfl.net).
- Review and update this policy, other online safety documents (e.g. Acceptable Use Policies) and the strategy on which they are based (in harmony with policies for behaviour, safeguarding, Prevent and others) and submit for review to the governors/trustees.
- Receive regular updates about online safety issues and legislation, be aware of local and school trends (see safeblog.lgfl.net for examples or sign up to the [LGfL safeguarding newsletter](https://lgflsafeguardingnewsletters.lgfl.net)).
- Ensure that online safety education is embedded across the curriculum in line with the statutory RSHE guidance (e.g. by use of the updated UKCIS framework '[Education for a Connected World – 2020 edition](https://educationforaconnectedworld.org)') and beyond, in wider school life.

- Promote an awareness of and commitment to online safety throughout the school community, with a strong focus on parents, including hard-to-reach parents (dedicated resources at parentsafe.lgfl.net).
- Communicate regularly with SLT and the safeguarding governor/committee to discuss current issues (anonymised), review incident logs and filtering/change control logs and discuss how filtering and monitoring work and have been functioning/helping.
- Ensure all staff are aware of the procedures that need to be followed in the event of an online safety incident, and that these are logged in the same way as any other safeguarding incident.
- Ensure adequate provision for staff to flag issues when not in school and for pupils to disclose issues when off site, especially when in isolation/quarantine, e.g. a [survey to facilitate disclosures](#) and an online form on the school home page about 'something that worrying me' that gets mailed securely to the DSL inbox.
- Ensure staff adopt a zero-tolerance, whole school approach to all forms of child-on-child abuse, and don't dismiss it as banter (including bullying).
- Pay particular attention to **online tutors**, both those engaged by the school as part of the DfE scheme who can be asked to sign the contractor AUP, and those hired by parents.

Governing Body, led by Online Safety /Safeguarding Link Governor

Key responsibilities (quotes are taken from Keeping Children Safe in Education)

- Approve this policy and strategy and subsequently review its effectiveness, e.g. by asking the questions in the helpful document from the UK Council for Child Internet Safety (UKCIS) [Online safety in schools and colleges: Questions from the Governing Board](#).
- Undergo (and signpost all other governors and Trustees to attend) safeguarding and child protection training (including online safety) at induction to provide strategic challenge and into policy and practice, ensuring this is regularly updated (LGfL's Safeguarding Training for school governors is free to all governors at safetraining.lgfl.net).
- Ensure that all staff also receive appropriate safeguarding and child protection (including online) training at induction and that this is updated.
- Appoint a filtering and monitoring governor to work closely with the DSL on the new filtering and monitoring standards (there is guidance for governors at safefiltering.lgfl.net).
- Support the school in encouraging parents and the wider community to become engaged in online safety activities.
- Have regular strategic reviews with the online safety coordinator / DSL and incorporate online safety into standing discussions of safeguarding at governor meetings.

- Work with the DPO, DSL and headteacher to ensure a compliant framework for storing data but helping to ensure that child protection is always put first, and data-protection processes support careful and legal sharing of information.
- Check all school staff have read Part 1 of KCSIE; SLT and all working directly with children have read Annex B.
- Ensure that all staff undergo safeguarding and child protection training (including online safety and now also reminders about filtering and monitoring).
- “Ensure that children are taught about safeguarding, including online safety [...] as part of providing a broad and balanced curriculum [...] Consider a whole school or college approach to online safety [with] a clear policy on the use of mobile technology.”

PSHE / RSHE Lead/s

Key responsibilities:

- As listed in the ‘all staff’ section, plus:
- Embed consent, mental wellbeing, healthy relationships and staying safe online as well as raising awareness of the risks and challenges from latest trends in self-generative artificial intelligence, financial extortion and sharing intimate pictures online into the PSHE / Relationships education, relationships and sex education (RSE) and health education curriculum. “This will include being taught what positive, healthy and respectful online relationships look like, the effects of their online actions on others and knowing how to recognise and display respectful behaviour online. Throughout these subjects, teachers will address online safety and appropriate behaviour in an age-appropriate way that is relevant to their pupils’ lives.” [training is available at safetraining.lgfl.net]
- Focus on the underpinning knowledge and behaviours outlined in [Teaching Online Safety in Schools](#) in an age appropriate way to help pupils to navigate the online world safely and confidently regardless of their device, platform or app.
- Assess teaching to “identify where pupils need extra support or intervention [through] tests, written assignments or self-evaluations, to capture progress” – to complement the computing curriculum.
- Work closely with the DSL/OSL and all other staff to ensure an understanding of the issues, approaches and messaging within PSHE / RSHE.
- Note that an RSHE policy should be included on the school website.
- Work closely with the Computing subject leader to avoid overlap but ensure a complementary whole-school approach, and with all other lead staff to embed the same whole-school approach.

Computing Lead

Key responsibilities:

As listed in the ‘all staff’ section, plus:

- Oversee the delivery of the online safety element of the Computing curriculum in accordance with the national curriculum.

- Work closely with the RSHE lead to avoid overlap but ensure a complementary whole-school approach.
- Work closely with the DSL/OSL and all other staff to ensure an understanding of the issues, approaches and messaging within Computing.
- Collaborate with technical staff and others responsible for ICT use in school to ensure a common and consistent approach, in line with acceptable-use agreements.

Subject Leaders

Key responsibilities:

As listed in the 'all staff' section, plus:

- Look for opportunities to embed online safety in your subject or aspect, especially as part of the RSHE curriculum, and model positive attitudes and approaches to staff and pupils alike.
- Consider how the UKCIS framework Education for a Connected World and Teaching Online Safety in Schools can be applied in your context.
- Work closely with the DSL/OSL and all other staff to ensure an understanding of the issues, approaches and messaging within Computing.
- Ensure subject specific action plans also have an online safety element.

Network Manager/other technical support roles

Key responsibilities:

As listed in the 'all staff' section, plus:

- Collaborate regularly with the DSL and leadership team to help them make key strategic decisions around the safeguarding elements of technology.
- Support safeguarding teams to understand and manage filtering and monitoring systems and carry out regular reviews and annual checks.
- Support DSLs and SLT to carry out an annual online safety audit as recommended in KCSIE. This should also include a review of technology, including filtering and monitoring systems (what is allowed, blocked and why and how 'over blocking' is avoided as per KCSIE) to support their role as per the DfE standards, protections for pupils in the home and remote learning.
- Keep up to date with the school's online safety policy and technical information in order to effectively carry out their online safety role and to inform and update others as relevant.
- Work closely with the designated safeguarding lead / online safety lead / data protection officer / RSHE lead to ensure that school systems and networks reflect school policy and there are no conflicts between educational messages and practice.
- Ensure the above stakeholders understand the consequences of existing services and of any changes to these systems (especially in terms of access to personal

and sensitive records / data and to systems such as YouTube mode, web filtering settings, sharing permissions for files on cloud platforms etc.

- Ensure filtering and monitoring systems work on new devices and services before releasing them to pupil/students and staff.
- Maintain up-to-date documentation of the school's online security and technical procedures.
- To report online safety related issues that come to their attention in line with school policy.
- Manage the school's systems, networks and devices, according to a strict password policy, with systems in place for detection of misuse and malicious attack, with adequate protection, encryption and backup for data, including disaster recovery plans, and auditable access controls.
- Ensure the data protection policy and cybersecurity policy are up to date, easy to follow and practicable.
- Monitor the use of school technology, online platforms and social media presence and that any misuse/attempted misuse is identified and reported in line with school policy.
- Work with the Headteacher to ensure the school website meets statutory DfE requirements (the technical team is likely to play at least some role in working with the web team).

Trust Data Protection Officer and Designated Data Protection Lead

Key responsibilities:

- Alongside those of other staff, provide data protection expertise and training and support the DP and cybersecurity policy and compliance with those and legislation and ensure that the policies conform with each other and with this policy.
- Not prevent, or limit, the sharing of information for the purposes of keeping children safe. As outlined in *Data protection in schools, 2023*, "It's not usually necessary to ask for consent to share personal information for the purposes of safeguarding a child." And in KCSIE, "The Data Protection Act 2018 and UK GDPR do not prevent the sharing of information for the purposes of keeping children safe. Fears about sharing information must not be allowed to stand in the way of the need to safeguard and promote the welfare and protect the safety of children."
- Note that retention schedules for safeguarding records may be required to be set as 'very long term need' (until the child is aged 25 or older). Please refer to our retention schedules for further information regarding this.
- Ensure that all access to safeguarding data is limited as appropriate, and also monitored and audited.

Volunteers and contractors (including tutor)

Key responsibilities:

- Read, understand, sign and adhere to an acceptable use policy (AUP).
- Report any concerns, no matter how small, to the designated safety lead.
- Maintain an awareness of current online safety issues and guidance.
- Model safe, responsible and professional behaviours in their own use of technology at school and as part of remote teaching or any online communications.
- Note that as per AUP agreement a contractor will never attempt to arrange any meeting, **including tutoring session**, without the full prior knowledge and approval of the school, and will never do so directly with a pupil. The same applies to any private/direct communication with a pupil.

Pupils/Students

Key responsibilities:

Read, understand, sign and adhere to the student/pupil acceptable use policy.

Parents/carers

Key responsibilities:

- Read, sign and adhere to the school's parental acceptable use policy (AUP), read the pupil AUP and encourage their children to follow it.

External groups (e.g. those hiring the premises) including PTAs

Key responsibilities:

- Any external individual/organisation will sign an acceptable use policy prior to using technology or the internet within school.
- Support the school in promoting online safety and data protection.
- Model safe, responsible, respectful and positive behaviours in their own use of technology, including on social media: not sharing other's images or details without permission and refraining from posting negative, threatening or violent comments about others, including the school staff, volunteers, governors, contractors, pupils/students or other parents/carers.

Review Schedule

Policy Author	Trust Data Protection Officer
Policy Approver	Trust Corporate Services Director
Current Policy Version	5.0
Policy Effective From	1 st September 2024
Policy Review Date	31 st August 2025

Revision Schedule

Version	Revisions	By whom
1.0	Original document produced	DPO
2.0	New version due to significant changes throughout the policy to bring it in line with KCSIE 2020 and COVID-19 remote learning/working requirements. DFO and IT Consultant reviewed and provided technical input.	DPO
2.1	Reviewed in line with KCSIE 2021 – updated throughout. Sexting section and references to sexting updated “sharing nudes and semi nudes”, reviewed with consideration to the government’s peer on peer sexual abuse investigation, IT support provider section added, all links to other documentation/guidance updated, appendices page changed to “Other documentation/guidance relevant to this policy”, pupils changed to pupils/students throughout.	DPO
3.0	Reviewed in line with KCSIE 2022. Policy updated in many areas and sections moved around to make it easier to read. New version.	DPO
4.0	Major updates throughout the policy to reflect KCSIE 2023.	DPO
5.0	Reviewed in line with KCSIE 2024. Policy updated in many areas. There is some added content about use of CCTV (if this is in place), filming in and outside school, use of generative AI and filtering and monitoring.	DPO